

# 2014 West Branch Classic

All Proceeds will go to the non-profit organization:  
Michigan Youth Cycling Foundation

Date: June 14th -15th

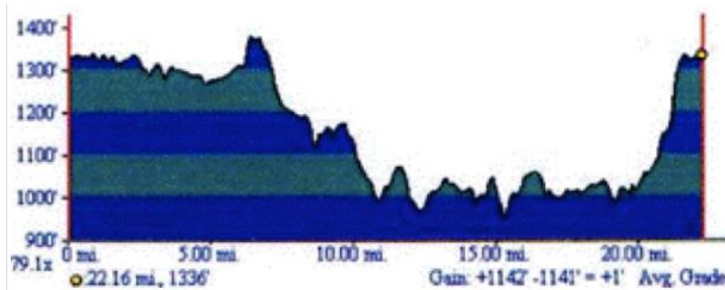
Registration: [USACycling.org](http://USACycling.org)

Website: [WestBranchClassic.org](http://WestBranchClassic.org)

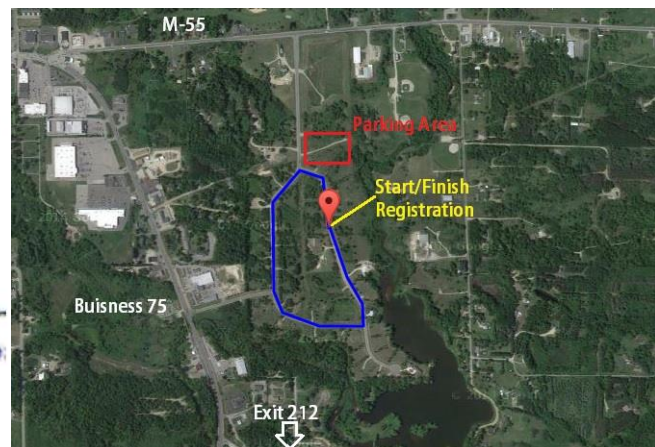
The West Branch Classic Road Race and Criterium are both [MBRA](http://MBRA) Points Series Races



Road Race lap profile:



Criterium Course:



# 2014 West Branch Classic criterium

All Proceeds will go to the non-profit organization:

Michigan Youth Cycling Foundation

**Date:** Saturday, June 14th, 2014

**Location:** Fox Estates, Fox Run Rd, West Branch, MI

**Course:** [gmap-pedometer.com/?r=5863100](http://gmap-pedometer.com/?r=5863100)

**Registration:** [USA Cycling](http://www.usacycling.org)

<http://www.westbranchclassic.org/>



**MBRA**  
MICHIGAN BICYCLE  
RACING ASSOCIATION



Category	Start Time	Duration	Payout/ Places	Min/Max Field	Entry Fee	Day of Entry Fee
Juniors 9-14	12:00pm	15min	Prizes/3	1/50	\$ 10.00	\$ 20.00
Juniors 15-18	12:20pm	20mins	Prizes/3	1/50	\$ 10.00	\$ 20.00
Cat 5 Men	12:45pm	30mins	Prizes/3	10/75	\$ 40.00	\$ 55.00
Cat 4 Men	1:20pm	35mins	\$225/5	10/100	\$ 40.00	\$ 55.00
Masters 45+	2:00pm	35mins	\$300/5	10/100	\$ 40.00	\$ 55.00
Masters 55+	2:00pm		\$150/3	5/100	\$ 40.00	\$ 55.00
Cat 4 Women	2:40pm	30mins	Prizes/3	3/75	\$ 40.00	\$ 55.00
Masters 35+	3:15pm	35mins	\$350/6	10/100	\$ 40.00	\$ 55.00
Cat 3 Men	3:55pm	45mins	\$400/7	10/100	\$ 40.00	\$ 55.00
Women Cat Pro,1,2,3	4:45pm	45mins	\$400/7	7/100	\$ 40.00	\$ 55.00
Cat Pro/1/2 Men	5:30pm	60mins	\$700/10	10/100	\$ 40.00	\$ 55.00

**Register for the Road Race and Criterium together online and save \$10.00**

**The Multiple fee replaces the registration fee for a second or third criterium race. The Multiple fee increases \$5 for day of. Multiple fee is applicable to the later starting race only.**

Races in dark grey will be raced together, scored and paid separately according to the MBRA MI Points Challenge.

Juniors 10-14 will include boys 9-12, 13-14 and girls 9-12, and 13-14.

Juniors 15-18 will include boys 15-16, 17-18 and girls 15-16, 17-18

\*Purse is based on the number of registered riders by May 30th. Promoter reserves the right to adjust payout and combine fields

\*Single Day License holders can only race Men Cat 5, Women Cat 4 or Junior races

\*\*\*It is the riders responsibility to know the course and a refund will not be giving for a racer getting lost.

\*\*\*Racers must be present at the time of awards to receive payment. Race winnings will not be mailed.

# 2014 West Branch Classic Road Race

All Proceeds will go to the non-profit organization:  
Michigan Youth Cycling Foundation

**Date:** Sunday, June 15th, 2014

**Location:** Co Rd 15/N Fairview Rd Ogemaw Hills Pathway, West Branch, MI

**Course:** gmap-pedometer.com/?r=5863086

**Registration:** USA Cycling <http://www.westbranchclassic.org/>

Parking lot capacity is 110 cars, please consider carpooling with fellow racers if possible. Overflow parking will be available if necessary 1.3 miles from start area. Each lap is approximately 22 miles.



Category	Start Time	Distance	Payout/ Places	Min/Max Field	Entry Fee	Day of Entry
Cat 4 Men	9:00am	44 Miles	\$300/5	10/100	\$ 40	\$ 55
Cat 5 Men	9:05am	44 Miles	Prizes/3	10/75	\$ 40	\$ 55
Cat 3 Women	9:10am	44 Miles	\$200/3	10/100	\$ 40	\$ 55
Cat 4 Women	9:15am	22 Miles	Prizes/3	3/75	\$ 40	\$ 55
Juiors 15-18	9:20am	22 Miles	Prizes/3	1/50	\$ 20	\$ 30
Juniors 9-14	9:25am	22 Miles	Prizes/3	1/50	\$ 20	\$ 30
Cat Pro/1/2 Men	11:30am	88 Miles	\$800/10	15/100	\$ 40	\$ 55
Cat 3 Men	11:35am	66 Miles	\$500/7	10/100	\$ 40	\$ 55
Masters 35+	11:40am	66 Miles	\$400/5	10/100	\$ 40	\$ 55
Masters 45+	11:45am	66 Miles	\$350/5	10/100	\$ 40	\$ 55
Women Cat Pro,1,2	11:50am	66 Miles	\$300/5	10/100	\$ 40	\$ 55
Masters 55+	11:55am	44 Miles	\$300/5	10/100	\$ 40	\$ 55

**Register for the Road Race and Criterium together online and save \$10.00**

Races in grey will be raced together, scored and paid separately according to the MBRA MI Points Challenge.

Juniors 9-14 will include boys 9-12, 13-14 and girls 9-12, and 13-14.

Juniors 15-18 will include boys 15-16, 17-18 and girls 15-16, 17-18

\*Purse is based on the number of registered riders by May 30th. Promoter reserves the right to adjust payout based on minimum field size not being met

\*Single Day License holders can only race Men Cat 5, Women Cat 4, or Junior races

\*\*\*It is the riders responsibility to know the course and a refund will not be giving for a racer getting lost.

\*\*\*Racers must be present at the time of awards to receive payment. Race winnings will not be mailed.